

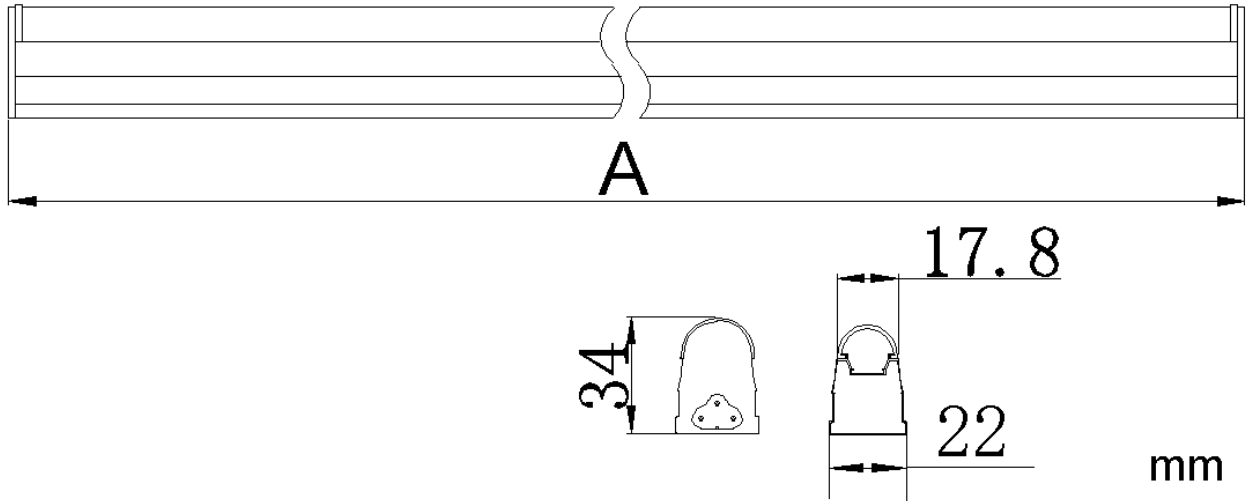
LED T5 Integration Tube 5W/8W/12W/16W



I. Features

- △ 60% saving than fluorescent tube, our LED T5 pay for themselves in 1 year
- △ Eco-friendly.no UV, no hissing or flickering, mercury and lead free.
- △ 30,000hours lifetimes,Lumen maintenance>95%,after 6,000 hours.
- △ Safety.Anti electric shock.High voltage passed

II.Specifications



(II- 1) Parameters

LED T5 Integration Tube 5W/8W/12W/16W

Products	5W	8W	12W	16W
Item No.	GET5-I30-5W	GET5-I60-8W	GET5-I90-12W	GET5-I120-16W
Length A (mm)	305	565	870	1175
Input Voltage(V)*	AC185-265V	AC185-265V	AC185-265V	AC185-265V
Wattage(W)	5	8	12	16
Pf*	0.6	0.60	0.6	0.60
Output Voltage(V)	DC72-80V	DC72-80V	DC72-80V	DC72-80V
Lumen(Minimum)	410lm	680lm	1020lm	1360lm
CRI*	>70	>70	>70	>70
Beam Angle	>170°	>170°	>170°	>170°
LED Type	SMD2835	SMD2835	SMD2835	SMD2835
LED QTY*	28	48	72	96
CCT*	3000K/4500K/6000K	3000K/4500K/6000K	3000K/4500K/6000K	3000K/4500K/6000K
Housing	Aluminum+ Optical	Aluminum+ Optical	Aluminum+ Optical	Aluminum+ Optical

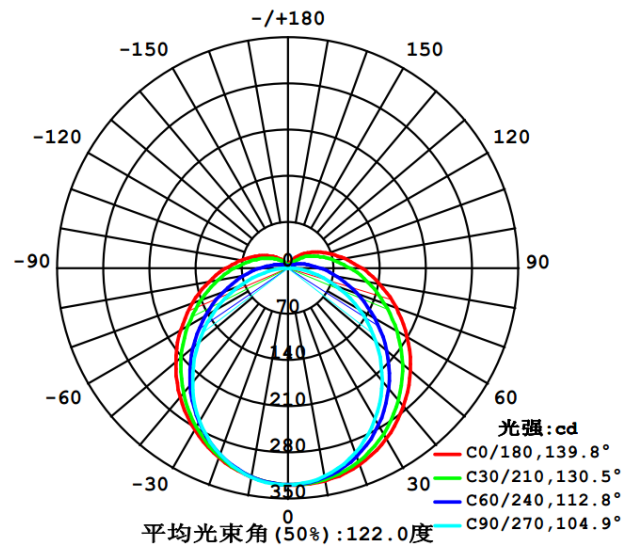
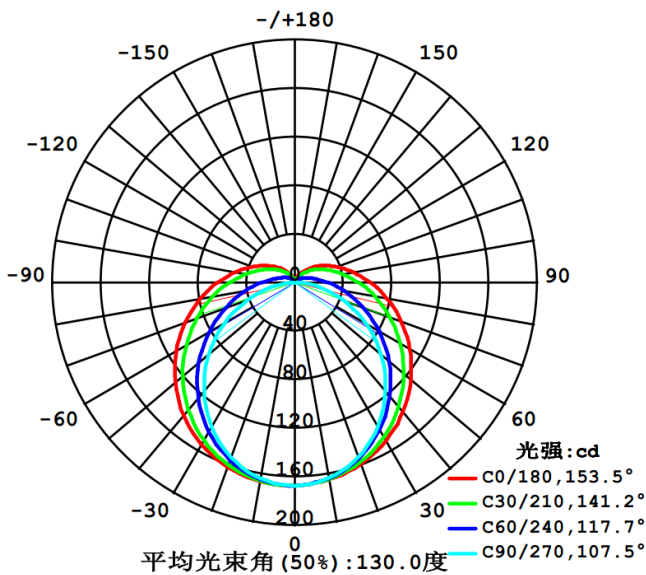
	Polycarbonate	Polycarbonate	Polycarbonate	Polycarbonate
PC Cover	Milky, Clear	Milky, Clear	Milky, Clear	Milky, Clear
Cab	N/A	N/A	N/A	N/A
IP Rating	IP20	IP20	IP20	IP20
Operating Tem.	-20-40°C	-20-40°C	-20-40°C	20-40°C
CERTIFICATES	CE,RoHs,PSE	CE,RoHs,PSE	CE,RoHs,PSE	CE,RoHs,PSE
N.W.	55g	90g	150g	185g

*can OEM Customization parameter

(II-2) Light Distribution Diagram

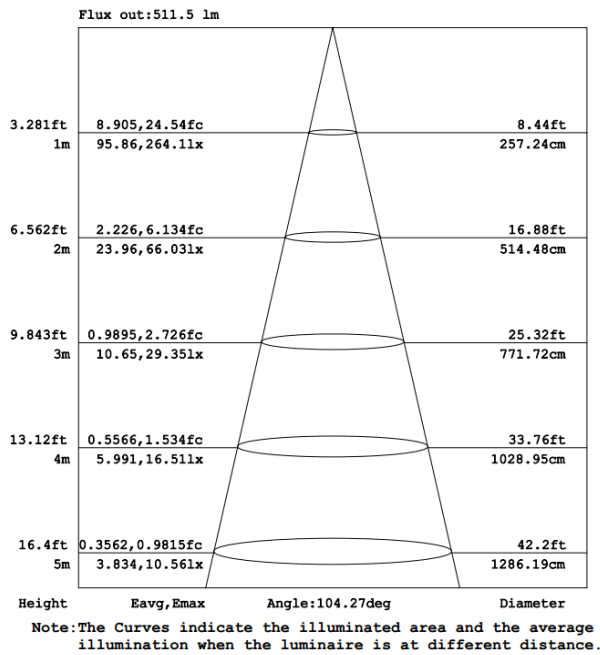
GET5-I60-8W (0.6M-48LEDs 6K 220VAC)

GET5-I120-16W (1.2M-96LEDs 6K 220VAC)

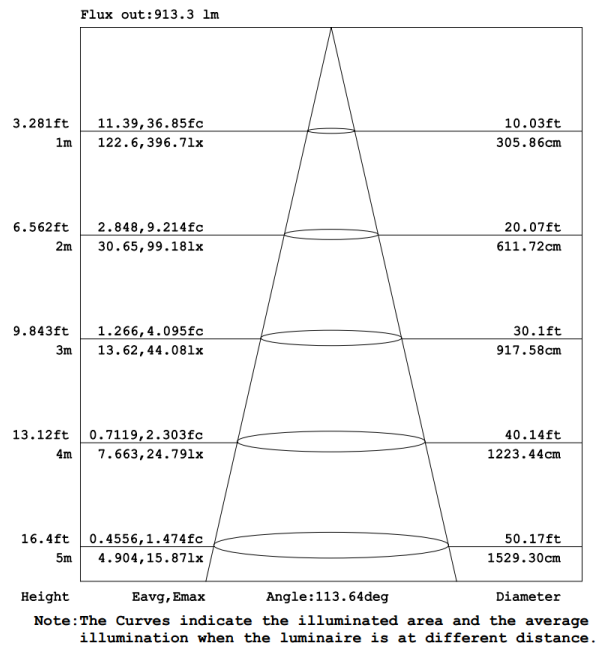


(II-3) Light AAI Figure

GET5-I60-8W (0.6M-48LEDs 6K 220VAC)



GET5-I120-16W (1.2M-96LEDs 6K 220VAC)



III. Cautions

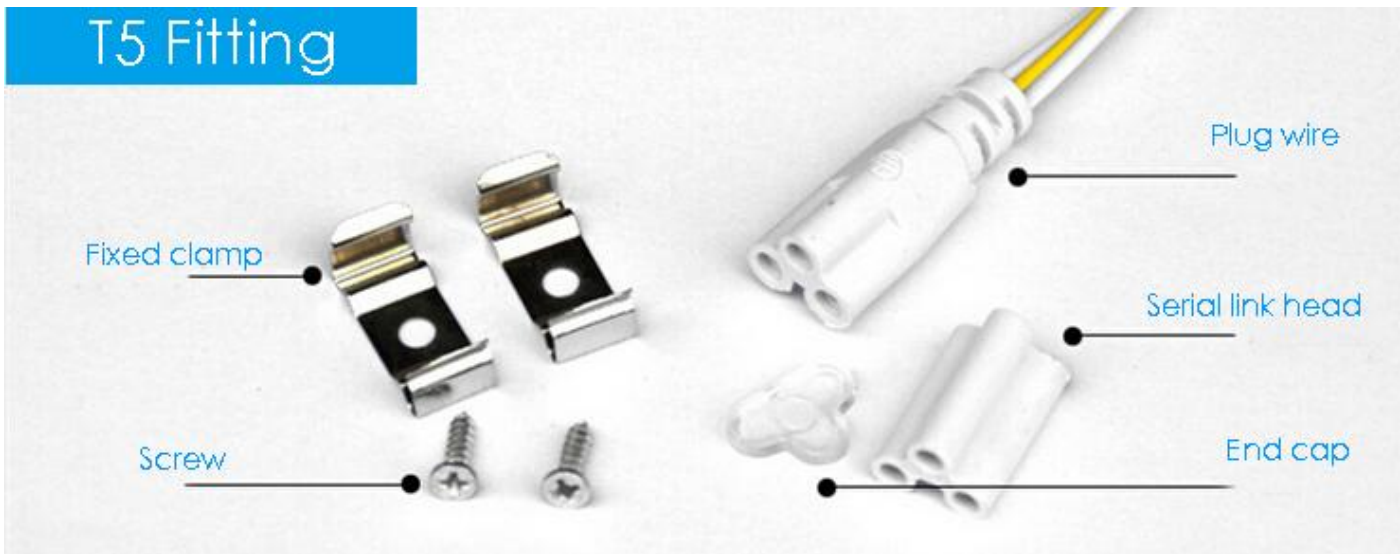
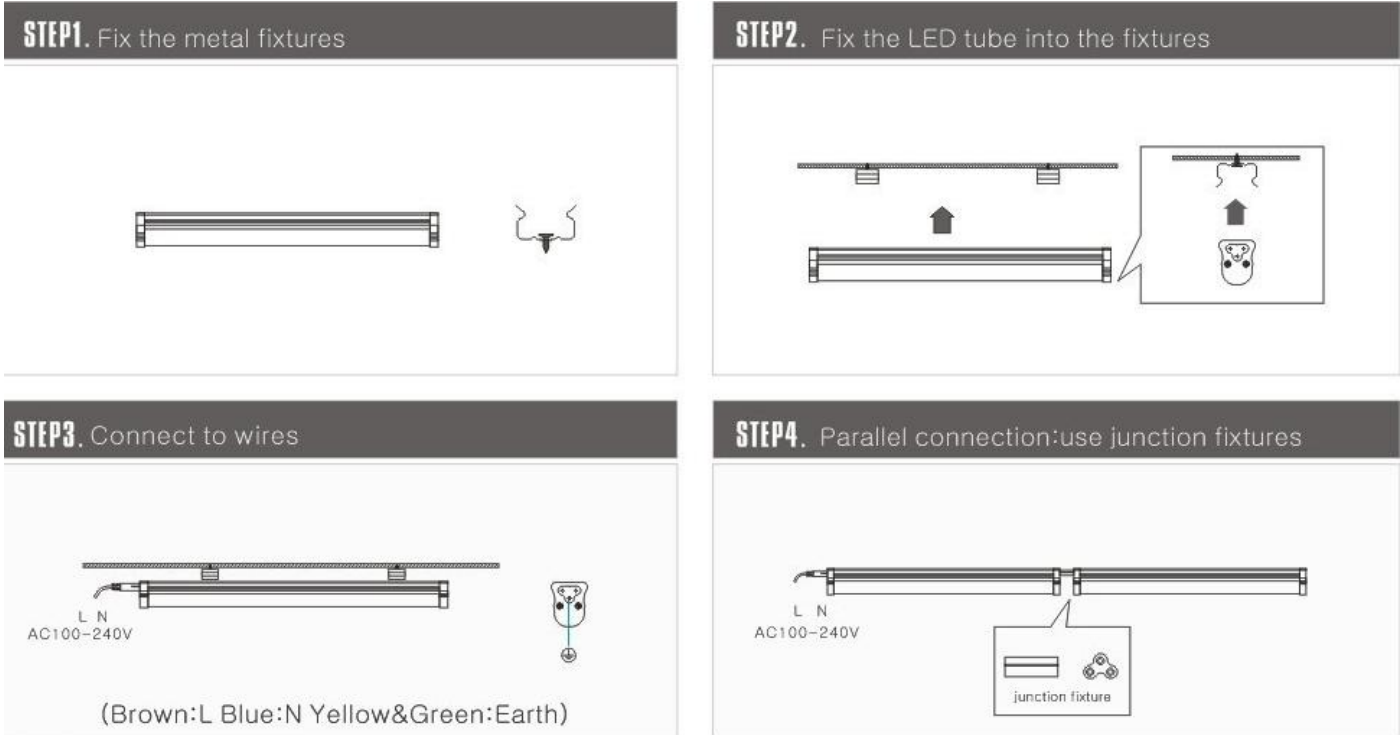
1. Installation to be performed by qualified service personnel only.
2. Installer must determine luminaire electrical rating matches the replacement lamp ratings.
3. This product is intended for dry indoor use only. Do not expose to explosive gas.
4. Do not expose wiring to sheet metal edges or other sharp objects.

V. Installation Diagrams

Always turn off the electricity supply before installation.

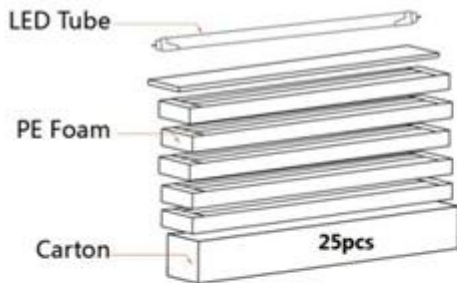
1. When install or replace, please shut off power supply of tubes.
2. If the installation or failure occurs, please professional personnel to install or uninstall and maintenance.
3. Please do not open the product itself.
4. Please don't use the Tube in acid mist gas place.
5. Please follow the installation diagram instructions.

6. The plug into the lamp socket with AC 220V/AC 85V-265V(According to local custom voltage requirements)

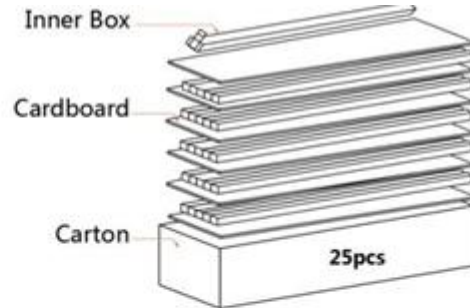


IV. Packaging

(1). EPE + Carton



(2) Inner Box +Carton



Products	5W	8W	12W	18W
Length A (mm)	305	565	870	1175
Qty/CTN	*50pcs	25pcs	25pcs	25pcs
CTN Size	660*19*16.5	650*19*16.5	950*19*16.5	1250*19*16.5
G.W/CTN(kg)	7.5	7	8.8	10.5

* 5W T5 50pcs/carton

*5 pcs in one poly foam slot. totally

*5 layers, then in one Poly bag.